

Fun, friends and activities  
for children and young  
people with disabilities



Spring Edition 2019

*Welcome to the Spring edition of 'All In'.*



### *Keeping you posted*

To make sure you keep up to date with any changes to the 'All In' programme and get to hear about new and exciting opportunities in the community subscribe on the Shropshire Council website.

## *Important Information*

The Short Break opportunities in this activity programme are available to children and young people;

- Up to the age of 18,
- Who live in Shropshire,
- Who have a disability that prevents them from accessing mainstream activities without support,
- Who are a registered member of 'All In'.

By becoming a member of All-in, we can ensure that our Short Breaks reach the right families, children and young people.

Registration can be completed online <https://shropshire.gov.uk/the-send-local-offer/parentcarers/social-care/short-breaks-activities/> or by telephone 0345 6789021

### **Please note:**

- **You must book onto the opportunities available. Providers reserve the right to turn people away if they have not booked.**

Unless otherwise stated please book onto an opportunity 7 days in advance.

- **The 'All In' programme provides different opportunities for children/young people with different needs. Some activities may not be suitable for every child/young person.**
- **Parents/Carers may be required to stay for the duration of the activity. Please discuss this with the provider when booking and also whether they are able to cater for the needs of your child/young person.**

Your child/young person may be able to access more opportunities when accompanied by a responsible adult or their familiar support worker.

- **All opportunities are subject to availability and eligibility.**

For further information about Short Breaks:

Telephone: **0345 6789021**

Email: **[shortbreaks@shropshire.gov.uk](mailto:shortbreaks@shropshire.gov.uk)**

Web: **<https://shropshire.gov.uk/the-send-local-offer/parentcarers/social-care/short-breaks-activities/>**

# SHROPSHIRE youth

targeted activities group

11-18?

Supporting young people  
to take part in and  
develop their...

Our SEND youth groups run weekly during term time in Shrewsbury and Bridgnorth

All of our groups have friendly, experienced and qualified staff teams who provide support, motivation, information, equality of opportunity and lot's of fun!

Parents & Carers welcome

## Smile

Tuesday Evening from 18:30-20:30

Monkmoor Lodge Youth Centre  
Upton Lane, Shrewsbury  
SY2 5RR

## The Who Group

Wednesday Evening from 18:30-20:30

Bridgnorth Youth Centre  
Innage Lane, Bridgnorth  
WV16 4HS

## Big Time

Friday Evening from 19:00-21:00

The Grange Youth Centre  
Mount Pleasant Road, Shrewsbury  
SY1 3JT

For more information or to discuss joining contact either:

Julie Brotherton  
Youth Worker

julie.brotherton@shropshire.gov.uk  
07990 087829

Ashley Silverstone  
Youth Worker

ash.silverstone@shropshire.gov.uk  
07990 088101

Cooking and Baking

Confidence

Self-Esteem

Independence

Sports Skills

Music

Decision Making

And Much More!

Shropshire  
Council

## Saturday activity club

Action For Children provide a Saturday club for 'All In' members aged 4 to 18.

The sessions are suitable for children and young people with various needs and disabilities including those with more complex needs.

### Sessions run weekly during term time:

**Location: Belle Vue Youth Club, Rocke Street, Shrewsbury, SY3 7PY**

Date	Time	Activity	Age	Contact
<b>Saturdays</b> Term time only  <b>£5 per session</b> payable in advance for all sessions	9.30am - 12.30pm	There is a wide variety of activities on offer which are child led: ball and sports games (football, cricket and basketball), arts & crafts, puzzles, board games, DVD's, toys, sensory and messy play. There will also be opportunities (weather and transport dependent) to local cinema and parks/walks.	4 - 11 years	<b>For further information or to book a place 01743 285765.</b>
	1.30pm - 4.30pm		12 - 18 years	
	1.30pm - 4.30pm	Independence workshops with changing themes including money skills, actual travel on public transport, road safety and time.	12 - 18 years	

## Holiday Club

Action For Children provide a holiday club during every school holiday. The holiday club includes a variety of changing activities in different locations across the county including day trips.

The holiday club is available for children aged between 4 and 18 and is also suitable for children with more complex needs. Please contact Action For Children for further information, to discuss suitability for your child or to be added to their mailing list.



Please contact Debbie King on **01743 285765** or **Deborah.king@actionforchildren.org.uk**

## Come and join the fun at Tickwood Farm near Much Wenlock where sessions around drama, stories and forest skills activities such as den building are offered.

There is also an accessible trail which the whole family can enjoy together after the session has finished.

**Booking is essential:** <https://bookwhen.com/ignitioncreate>



**Location: Tickwood Farm, Wyke, Much Wenlock. TF13 6NZ**

Date	Time	Activity	Age	Contact
Fortnightly on Saturdays (term time) £30 for the 5 week course or £8 per individual session	10am -12pm	<b>Woods Meets Words</b> Outdoor storytelling and forest skills course for children with SEND aged 5-11. Each week uses a different story as a theme, and activities and forest skills are based on the events of the story. A snack and drink are provided for participants, and sessions conclude with free play in the forest. Siblings welcome.	5-11 years	For further information <a href="mailto:info@i-ignition.co.uk">info@i-ignition.co.uk</a> or visit <a href="http://www.bookwhen.com/ignitioncreate">www.bookwhen.com/ignitioncreate</a>
	12.30 -2.30pm	<b>Moves</b> 'Moves' is an exciting Movement and Drama course for young people with SEND aged 11-14. Participants will be working with professional artists to create original and exciting performances in the forest setting using movement and drama with a performance at the end of the 5 week course.	11-14 years	



Shrewsbury Town in the Community provides a changing variety of sessions each Friday during term time at the Montgomery Waters Meadow stadium in Shrewsbury.

A number of holiday club sessions are also offered during school holidays providing a longer session and the opportunity for the children and young people to try a wider range of activities.

Sessions are split into two groups to ensure that they are age appropriate.

**A contribution of £2 towards the cost of Friday sessions and £7 for the holiday sessions is payable and places must be booked in advance.**

**Location: Montgomery Waters Meadow, Oteley Road, Shrewsbury, SY2 6ST**

Date	Time	Activity	Age	Contact
5th April	4-5:30pm	Basketball	5 - 14 year olds	<b>01743 289177</b> ext 239  <b>community@</b> <b>shrewsburytown.</b> <b>co.uk</b>
12th April		Football		
26th April	9am-12am	HOLIDAY CLUB		
3rd May	4pm-5:30pm	Handball		
10th May		Hockey		
17th May		Multi Sports		
24th May		Cricket		
31st May	9am-12am	HOLIDAY CLUB		
7th June	4pm-5:30pm	Basketball		
14th June		Football		
21st June		Handball		
28th June		Hockey		



**Autism West Midlands will be offering their summer holiday programme for young people aged 13-17.**

Activities will include arts & crafts, cooking & baking, fun science activities, climbing wall, trampolining and day trips. Plus there will be opportunities to explore autism, self-esteem, anxiety and other issues.

**Location: Belle Vue Youth Club, Rocke Street, Shrewsbury. SY3 7PY**

Date	Time	Cost	Age	Contact
Every Wednesday and Friday from 31st July to 30th August	11am-4pm	<p><b>First five sessions are £10 each</b></p> <p><b>Further sessions are £8</b></p> <ul style="list-style-type: none"> <li>A minimum booking of 5 sessions is required</li> <li>Sessions must be booked in advance</li> <li>Young people must be able to engage in activities independently and have an ASD diagnosis</li> </ul>	13-17 years	<p>wcowton@autismwestmidlands.org.uk</p> <p>01743 236193</p>



Autism West Midlands offer other opportunities through the year such as family activities in school holidays. Please contact [shropshire@autismwestmidlands.org.uk](mailto:shropshire@autismwestmidlands.org.uk) to join their mailing list.



Shropshire Youth Association 'Youth Zone' is for SEND young people aged 10-18<sup>th</sup> Birthday who would like to access provision independent of Parents & Carers. We are a friendly social group who meet for trips and activities throughout the year. Transport is provided from Bridgnorth and Shrewsbury



## News alert!



This year we have NEW PLACES available for our Youth Zone project as some members have reached 18 (places are limited to 30 young people per trip)  
If you would like more information or an informal chat about your young person's needs or the project please contact the office and ask for Diane Phillips

### SAMPLE ACTIVITIES

Aeria 51 Trampoline Centre  
Chester Zoo  
Summer activity residential  
Bowling  
Climbing the walls  
PANTO



Builds confidence  
Encourages independence  
Raises self esteem  
Make new Friends

Qualified Youth Workers, DBS, Safeguarding and 1<sup>st</sup> Aid trained  
For more details and to obtain a booking form please contact  
Diane Phillips on 01743 730005 or e mail [di@sya.org.uk](mailto:di@sya.org.uk)



Location: Tickwood Farm, Wyke, Much Wenlock. TF13 6NZ



ONLY  
£20 PER  
NIGHT

### Overnight stays available...

The cabin sleeps 4 and is situated in beautiful woodland surroundings near Much Wenlock. The cabin is fully accessible and offers the opportunity for families to spend time together in a relaxed and informal environment.

When staying at Llama Cabin you are welcome to explore the surrounding woodlands of the Tickwood Farm Estate or use it as a base to visit local attractions such as the Severn Valley Railway and the Ironbridge Gorge Museums.



The lounge / diner has TV, wall safe, double sofa bed, the table and benches fold away to the wall.

A well equipped kitchen with toaster, microwave, oven/hob and fridge with freezer compartment.



## *'Out and About' – holiday activities*

Empathy for special children works across Shropshire providing support and social opportunity for those aged 0 - 18 years growing up with autism, associated conditions and additional needs and their families. All sessions are delivered and supported by trained and experienced playleaders and provide the opportunity for the whole family to enjoy time together and apart.

Out and About is a school holiday programme which aims to give families the support they need and the affordable opportunities for the whole family to fill their school holidays with fun and laughter. Activities are varied to meet the wide age range and different interests.

The Enable Team are at every session to lend a hand and offer their support.

### **Empathy also offer:**

- Friendship Groups in Craven Arms, Oswestry and Telford offering a range of changing fun sessions for the whole family.
- 'Unleashed' – a holiday programme for young people to have fun and gain independence away from their carers and family.
- 'Social Sibs' – a group that meets for 2 hours each month in Craven Arms, Oswestry and Telford.

For further information or to book a place:

- **Contact 07495 947987**
- **[enquiries@empathyforspecialchildren.org](mailto:enquiries@empathyforspecialchildren.org)**
- **[www.empathyforspecialchildren.org](http://www.empathyforspecialchildren.org)**



Marches Family Network are a charity operating in Shropshire and surrounding areas. Through Short Breaks funding they are able to offer Saturday play days in Ludlow. A contribution of £20 towards the cost of each session is payable and participants must be a registered All In member.

A range of changing activities will be on offer each session both indoor and outdoor and can include cookery, music, drama, arts, crafts, games, sports, activity centres and more...

**Location: Bitterley C of E Primary School, Ludlow. SY8 3HF**

Date	Time	Activity	Age	Contact
18th May	Saturdays (term time only) 10:30 to 3pm	Sports day	3 - 18 year olds	<b>Becky Hemming</b> <b>01568 614908</b>  <b>play@marchesfamilynetwork.org.uk</b>
15th June		Messy/sensory fun day		
13th July		Wildplay session Den building, survival skills and more		

Marches Family Network, through other funding secured outside of Shropshire Council, also offer opportunities (where spaces permit) to Shropshire Children at their Herefordshire clubs and activity sessions. Families need to provide their own transport to these activities and the standard service prices will apply.



Lower Bush Farm is a 40 acre farm between Ludlow and Bridgnorth.

The Farm has three Forest School sites and a wide range of animals. In the woods, children enjoy making dams, dens, climbing trees, running, making mud pies, swinging in hammocks and cooking over the fire. In the tools area children use saws, drills, etc. to make bird feeders, log reindeer, pencil holders, etc.

Each day the children help feed, groom, muck out and walk the animals which include, goats, pigs, rabbits, turtles, degus, rheas, poultry and peacocks.

Children will get wet and muddy splashing through the streams and woods so they will need to wear old clothes, waterproofs and welly boots.

\* Siblings are welcome.

**Location: Stoke St Milborough, Ludlow, SY8 2ES**

Date	Time	Activity	Age	Contact
Sessions run every Tuesday and Thursday through the school holidays	9 - 4pm	<p>Sessions will be based on the group's interest and will include:</p> <ul style="list-style-type: none"> <li>• Animal care (goats, pigs, poultry, rheas, horses).</li> <li>• Woodwork</li> <li>• Forest School</li> <li>• Archery</li> <li>• Outdoor pizza oven</li> <li>• Tractor / trailer rides</li> <li>• Animal care including goats, pigs, rabbits, horse, poultry and turtles</li> <li>• Growing vegetables in the poly tunnel and veg patch</li> </ul> <p><b>£10 for the first child and £5 for siblings. Booking is essential</b></p>	Ages 8 and over	<p>For further information or to book a place:  Rowanna <b>07734 295144</b>  or Oliver <b>07817 666267</b>  or email: <b>lowerbush@gmail.com</b>  or visit <b>www.lowerbush.co.uk</b></p>



## Moving and Grooving

The Moving & Grooving Team continues to provide ongoing group support at the Sports Village Saturday Club and Cycling session.



"The support and encouragement provided, combined with the enthusiasm and understanding of my child's abilities has given my son a chance to join in games confidently!"

"The Moving and Grooving staff fully understand my child's disabilities, limitations and her unpredictable behaviour."

"The Leisure Staff have got more experienced as they spend more time with children with special needs."



## London Road Sports Centre



London Road Sports Centre offer term time sports based fun and games sessions which are run by professional coaches experienced in delivering sessions to children and young people with a disability and will be supported by the London Road leisure staff.

A four week cycle of changing activities is offered and reviewed at the end of each term in consultation with those young people attending and their parent/carers.

\* *Siblings are also welcome.*



**Location: London Road, Shrewsbury, SY2 6PR**

Date	Time	Activity	Age	Contact
Week 1	Wednesdays Term Time 4.30 to 6 pm	Table tennis and badminton	8-18 years	For further information or to book a place: <b>01743 342591</b>
Week 2		Dodgeball and kick it cricket		
Week 3		Short tennis		
Week 4		Giant inflatable / fun and games		



## 'ALPHA' SWIMMING SESSIONS

### Oswestry Swimming and Fitness Centre

Location: Shrewsbury Road, Oswestry, SY11 4QB

Date	Time	Activity	Age	Contact
Tuesdays	6-6.30pm	<b>10 week block programme</b> ASA Alpha Swimming Programme (£22.50 per block of 10)	7 - 16 year olds	For further information or to book a place: <b>0345 0007 006</b>
Wednesdays				

### The Quarry Swimming and Fitness Centre

Location: Priory Road, Shrewsbury, SY1 1RU

Date	Time	Activity	Age	Contact
Tuesdays	5-5.30pm	<b>10 week block programme</b> ASA Alpha Swimming Programme (£22.50 per block of 10)	7 - 16 year olds	For further information or to book a place: <b>0345 0007 003</b>
Thursdays	4.30-5pm			

### SEN - Swimming Club

This is a club for children that have participated in the 'Alpha' swimming lessons and will build on technique and confidence in the pool.

**Each session is £2 and needs to be booked in advance.**

### Oswestry Swimming and Fitness Centre

Location: Shrewsbury Road, Oswestry, SY11 4QB

Date	Time	Activity	Age	Contact
Wednesdays	6 - 7pm	<b>Swimming club</b> £2 per session	7 - 16 year olds	For further information or to book a place: <b>0345 0007 006</b>



## The Quarry Swimming and Fitness Centre

**Location:** Priory Road, Shrewsbury, SY1 1RU

Date	Time	Activity	Age	Contact
Wednesdays	6-7pm	<b>Swimming club</b> £2 per session	7 - 16 year olds	For further information or to book a place: <b>0345 0007 003</b>

## Shrewsbury Sports Village

**Location:** Sundorne Road, Sundorne, Shrewsbury, SY1 4RQ

Date	Time	Activity	Age	Contact
<b>Fridays</b> Term time only	4-5pm	Ability Counts Football £1 per session	8 - 16 year olds	For further information or to book a place: <b>0345 0007 002</b>
<b>Saturdays</b> Term time and school holidays	10-11am	Cycling club Use of adapted cycles £1 per session		
<b>Saturdays</b> Term time and school holidays	11am - 12.30pm	Saturday Club £1.50 per session  This club offers a wide range of changing activities such as cookery, arts & crafts, wall climbing, Zumba, pond dipping, treasure hunts, fun & games and a giant inflatable obstacle course		





Enjoy a superb afternoon of horse riding at Country Treks Equestrian Centre. Based in the South Shropshire hills we are surrounded with woodland tracks, rolling hills and common land. Children can enjoy mini woodland challenges, mounted games, handy pony courses and more. Based at Ginny Hole, a 27 acre site with a 20x40 outdoor arena and log burner café it gives parents and carers the opportunity to relax while the children have fun with our friendly, qualified coaches.

Sessions have limited places available so it is important that you book your place early. A contribution towards the cost of this activity is required at £10 per session.

*Sibling places may be available please check with provider*

## Country Treks Equestrian Centre

**Location: Country Treks Equestrian Centre, The Old Vicarage, Stottesdon, Nr Cleobury Mortimer, Kidderminster, Worcestershire. DY14 8UH**

Date	Time	Activity	Age	Contact
Thursday 18th April	12.30 to 2pm	<ul style="list-style-type: none"> <li>• Guided rides around the centre</li> <li>• Treasure hunts</li> <li>• Gymkhana games</li> <li>• Lessons/tuition</li> <li>• Pony play</li> <li>• Grooming, washing, painting hooves</li> <li>• Decorating ponies</li> <li>• Musical rides</li> </ul>	6 - 16 year olds	Telephone: <b>01746 718436</b> Mobile: <b>07505 482040</b> Email: <b>enquiries@horsetreks.co.uk</b>
Sunday 2nd June				
Sunday 21st July				
Sunday 1st September				
Thursday 31st October				
Sunday 22nd December				
Wednesday 19th February 2020		And more...		

**Visit:** [www.tnsfc.co.uk](http://www.tnsfc.co.uk)

**Tel:** 01691 684840



## TNS all in Juniors



 **The Venue**

**For 4-9 year olds**

**Fridays**  
**5:30pm - 7pm**

**at The Venue**

Clubs are run on alternating weeks

## TNS all in



**For 10-18 year olds**

**Fridays**  
**6pm - 8pm**

**at The Venue**

Clubs are run on alternating weeks



**£3.50**  
per session

**Fortnightly activity club for young people with additional needs, supported by multi sport coaches and specialist support workers**

➤ Bowling ➤ Laser ➤ Sports ➤ Games ➤ Activities

For more information contact Naomi Stocker on [naomi@gotothevenue.com](mailto:naomi@gotothevenue.com).  
Or visit [www.shropshire.gov.uk](http://www.shropshire.gov.uk) for more information about the "All In" program.  
Participants must be registered with Shropshire Disabled Children's Team.

The Local Offer is your One Stop Shop for services and information relating to Special Educational Needs and Disability. This information is there to help you navigate your way through the world of SEND and to find the right help for you and your family.

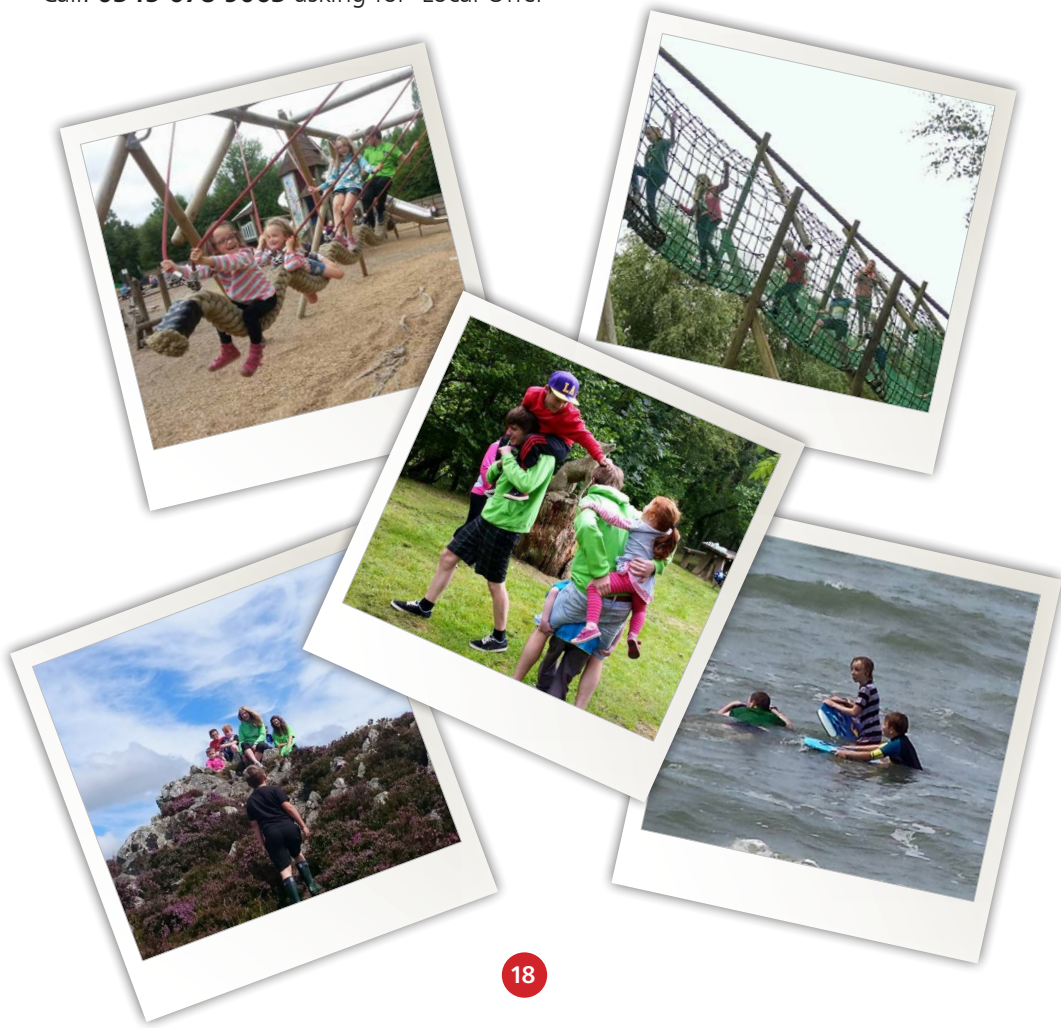
Our service directory and information pages cover education, health, and social care, as well as community services and support, independent living skills, and local events and activities.

Search: **'Local Offer Shropshire'**

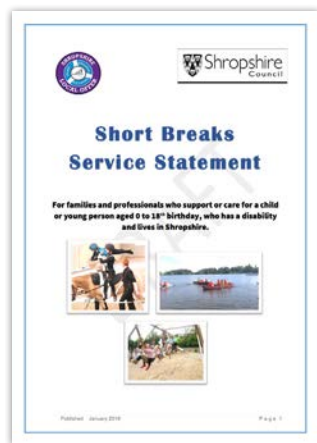
Visit: **[www.shropshire.gov.uk/the-send-local-offer/](http://www.shropshire.gov.uk/the-send-local-offer/)**

Email: **[local.offer@shropshire.gov.uk](mailto:local.offer@shropshire.gov.uk)**

Call: **0345 678 9063** asking for 'Local Offer'







Please take a look at our new updated version of the Short Breaks Statement at <https://shropshire.gov.uk/media/9795/shropshire-statement-apr18.pdf>

Our Short Breaks Statement is for families and professionals who support or care for a disabled child under 18 years of age.

It explains:

- what short breaks for disabled children and young people are
- what kind of breaks are available
- who can have these types of short breaks
- how to access a short break

Our latest statement includes improvements resulting from feedback gathered in a survey in December 2017 that parents, carers and professionals supporting children with disabilities took part in.

If you would like to make any suggestions for improvements to the statement, please contact us via our Local Offer website.

<http://shropshire.gov.uk/forms/web-feedback?url=http://shropshire.gov.uk/the-send-local-offer/>

