

Dear Parents/Carers

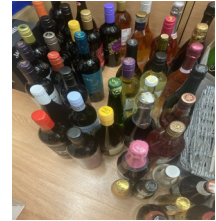
We demonstrate our Values of **respect, caring, supportiveness, tolerance, perseverance, forgiveness, and trust**, at Whixall C.E. Primary School in all that we strive to do each day.

WHIXALL SCHOOL NEWS

Christmas Fair



Thank you so much to everyone for your amazing donations to the Christmas Fair which is being held on Friday. We are absolutely overwhelmed by your generosity.



It was so lovely to see so many families at our parent consultations this week. We are so proud of all of all of our children and families, thank you for your support.

Diary Dates

Tuesday 11th November	All classes to visit the Memorial. Children who are members of uniformed organisations Beavers, Scouts etc may attend in their uniform.
Thursday 13th November	Year 5 glider challenge – parents will receive a letter regarding this on Monday.
Friday 14th November	Christmas Fair at school – see attached poster.
Tuesday 18th November	Dragonfly Parents Phonics workshop at 9.00 a.m. (please let the school office know if you are able to attend this workshop).
Wednesday 19th November	Skylark and Mayfly Class visit to Cosford Families have already received a letter regarding this.
Monday 24th November	Individual photographs
Sunday 30th November	Christingle Service (further details to follow)
Monday 1st December	Advent Journey Day
Tuesday 9th December	Carol Service 9.30 a.m.
Wednesday 10th December	Robin and Red Kite Visit to Tatton Park (Parents have already received a letter regarding this)
Tuesday 16th December	Christmas Lunch and Parties
Friday 19th December	Theatre visit Break up for Christmas Holidays

If you are concerned about someone's safety

In an emergency dial 999, but for other calls to the police please ring 101. To report a safeguarding concern by phone ring the **First Point of Contact team** on 0345 678 9044 Monday to Thursday, 9am to 5pm, and Friday 9am to 4pm. If you have urgent adult safeguarding concerns outside of these hours, please phone the **Emergency Social Work Duty Team** on 0345 678 9040.

PE

Please find below the days that each class will have their PE lessons. Children will need to come into school in their PE kits.

Monday—Robin Class (Year 3)

Tuesday—Mayfly Class (years 1 and 2), Bumblebee and Dragonfly Classes (Nursery and Reception) , Skylark Class (Year 1)

Wednesday— Red Kite Class—Year 4. Peregrine Class (Years 5 and 6)

Thursday—Bumblebee and Dragonfly Classes (Nursery and Reception), Skylark Class (Year 1) Mayfly Class (Years 1 and 2), Robin Class (Year 3), Peregrine Class (Year 6)

Friday – Red Kite Class—Year 4.

If all children could bring their outdoor learning clothes into school please and leave them in school, that would be appreciated. It would also be appreciated if all children could bring a pair of wellies into school please .

Christmas Fair

We are all looking forward to our Christmas Fair on
Friday 14th November
(please see attached flyer)



Surprise Jars

We would like to run a Surprise Jar stall at the Christmas Fair and would be extremely grateful if anyone is able to make a surprise jar at home. Surprise jars are decorated on the outside so that the contents can not be seen. Decorations could include making the jar into a Christmas Tree, Santa Claus or any of the amazing ideas that the children have. A small gift is then put into the jar. Your support is appreciated.

Golden Envelopes

On Friday we sent home a 'golden envelope' to each family. Families can put a pound coin in the envelope if you wish to enter and put your name and telephone number on the front of the envelope. All returned envelopes will go into a draw and the winning envelope pulled out on the night will receive a cash prize. If you do not wish to enter the Golden Envelope, we would be grateful if you would return the envelope to school. Thank you

Raffle Tickets

We have sent home a book of raffle tickets with each family to purchase if you wish – please could any unsold tickets be sent back into school to hopefully sell on the night.

Please telephone into school or email if you require any further books of raffle tickets.

Child Absence

Please telephone school (01948 880330) by 9.30am if your child is unwell and will not be attending that day. If leaving a message, can you please provide the exact reason why your child is absent. If we have not heard from you by 9.30am we will text you and then follow-up with a telephone call if we have still not heard from you by lunchtime.

We shall also be contacting parents of Nursery children who do not attend, for whatever reason, on days that we are expecting them. This is a health and wellbeing safeguarding check.

Poppy Appeal

Thank you so much to everyone who has supported the Poppy appeal, we still have a few remaining items so these will be on sale on Monday – we would very much appreciate everyone wearing their poppy items on Tuesday.



Support for parent carers of children with SEND

Shropshire's Local Offer

Having access to good quality information to help you understand the world of SEND is important when making decisions about your child's life.

This is where websites such as the [Shropshire's SEND Local Offer](#) can help you.

*** School Admissions Dates ***

Applications for Reception School Places

Children born between 1 September 2021 and 31 August 2022 can start primary school from September 2026

Applications can be made online from Monday 3rd November 2025 to 15th January 2026.

To apply please visit: <http://www.shropshire.gov.uk/schooladmissions>

click on: Apply to start or transfer school

then click on: Starting infant or primary school

If you have any queries please contact the office.

all about family

www.allabout-family.co.uk/national-magazine

A digital newsletter with lots of information to share with your children.

WEM SCOUTS CHRISTMAS TREES

Website; www.wemscoutschristmastrees.co.uk

Email; wemscoutschristmastrees@gmail.com

Facebook; Wem Scouts Christmas Trees

BEAUTIFUL FRESH, LOCAL
NORDMANN FIR TREES,
HANDMADE NATURAL
WILLOW WREATHS &
QUALITY TREE STANDS

Order online, or see us at our sales events;

29th Nov;
Wem Christmas festival 1pm-6pm

6th & 13th Dec;
Outside CoOp 10am-2pm

FREE
LOCAL
DELIVERY!

COFFEE & CHAT Wem

3rd Thursday of each month
1.30pm until 3pm
Wem Library, 3 High St, Wem,
Shrewsbury SY4 5AA

All families within the local area welcome

Free information, support & advice around:

- Family Life
- Housing & Finance
- Special Education Needs and/or Disabilities (SEND)
- Parenting Support
- Training & Employment
- Domestic Abuse Support
- And much more...

REFRESHMENTS WILL BE PROVIDED
"PLEASE BRING YOUR OWN SEALED CUP/TRAVEL MUG"

shropshire.gov.uk/early-help

WhatsApp Update

School WhatsApp groups

Are you part of a parent WhatsApp group at your child's school? These groups can be useful for sharing information and reminders, but it is important to use them thoughtfully. Here are some tips on how we can ensure they remain positive and respectful:

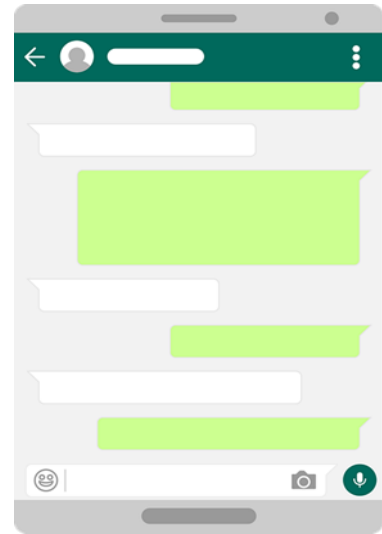
Be considerate –we know messages can sometimes be misinterpreted so carefully think about what you share. These groups should not be used to share criticisms of the school, staff or other parents and children. Any concerns should always be discussed with the school directly.

Don't spread rumours – avoid sharing any gossip within the group.

Protect privacy - do not share photos or videos of other children.

Think before you send – be mindful of the time and if the message necessary for everyone.

Our children watch how we communicate, so let's model healthy, online communication to them.



WhatsApp Channels

Users should be at least 13 years old to use WhatsApp. If your child is using WhatsApp, then you should be aware of WhatsApp Channels. Channels are a one-way broadcast tool used by companies and individuals to send updates to followers. WhatsApp Channels can be found on the Updates tab. From here you can view a whole host of channels, including channels that will not be age appropriate and may include adult content.



You cannot switch off access to channels and there is no age rating associated with the channels so you would have to access them to know what the content truly is. Klicksafe highlight what you should be aware of: <https://www.klicksafe.eu/en/news/was-sind-whatsapp-kanaele-und-was-muessen-eltern-beachten>

Find out more about WhatsApp channels in general here:

<https://faq.whatsapp.com/549900560675125>

Help to keep children safe online with Techosaurus

The NSPCC have created Techosaurus, a friendly dinosaur to assist you in having chats with your child about online safety. It is aimed at younger children and includes a book and activity pack (both chargeable). You can find out more here:

<https://www.nspcc.org.uk/advice-for-families/techosaurus/>

Santa Cruises

Saturday 6th and Sunday 7th December

Saturday 13th and Sunday 14th December

A cruise on the
Shropshire Lady and a
visit from Santa

Festive refreshments,
mince pies and
mulled wine

Tickets £12.50

includes a present for each child

To book:

santa@lyneal-trust.org.uk

or 01948 710708



Find us at
Lyneal Wharf, Ellesmere SY12 0LQ



Lyneal Trust
Charity No 516224



Discover our FREE rail safety
videos and keep your children
safe by visiting
railsafefriendly.com

THE RAIL SAFE FRIENDLY PROGRAMME

The Rail Safe Friendly programme has
educated over **3 million young people**
on the dangers of the railways.



SCAN ME

**DON'T LET YOUR
CHILDREN BECOME
THE NEXT**



"I implore you to listen to
Harrison's story"

Simon Frazer, Principal,
Gulsborough Academy



Are you a parent carer or a young person with special needs or learning differences (with or without a diagnosis)?

Here's where you can join us: Natter Matters sessions and family events

Natter Matters

Monday 8th September, 9.30am-11.30am Wem Town Hall

Stories and Crafts - Stories told by Jake Evans
Saturday 13th September, 1.30pm-3.30pm Wem Town Hall

Stories and Crafts - Stories told by Jake Evans
Saturday 11th October, 1.30pm-3.30pm Wem Town Hall

Natter Matters - Abi from PACC-Community Navigator Service
Monday 13th October, 9.30am-11.30am
Meeting Room, Wem Town Hall

Natter Matters

Monday 10th November, 9.30am-11.30am Wem Town Hall

Swimming - Whitchurch Swimming Pool
Date TBC (November), Sunday 11am-12pm

Natter Matters

Monday 8th December, 9.30am-11.30am Wem Town Hall

Please book on to events via the Wem SEN Hub Facebook Page

**WEM TOWN HALL
SEN EVENTS AND ACTIVITIES**



Relaxed Screening of Hotel Transylvania
Tuesday 28th October, 1.30pm - Wem Town Hall

Wem Town Hall Halloween Crafts SEN Session
Friday 31st October 1pm-2pm

Relaxed Screening of Polar Express (PJs Welcome)
Saturday 20th December, 1.30pm, Wem Town Hall

please book for these events directly with Wem Town Hall

You can also find us at

Wem Market every Thursday until 9th October

Wem Car boot - Sunday 14th September
9.00am-12.00pm Wem Recreational Ground

Quiet Space during
Wem Christmas Lights and Festival
1pm-6pm, Wem Town Hall



**Events coming in the
New Year**

The Animal Family
and
Keystage Circus

Unlock your musical potential with Wem Jubilee Training Band!

Would you like to learn to play a brass instrument? Whether you're a complete beginner or looking to sharpen your skills, the Wem Jubilee Training Band is the place for you.

What We Offer:

- **Expert Training** from passionate and experienced musicians
- **Instruments and Music Provided**
- **All Ages Welcome** Adults and children are welcome (from 8 upwards) — no experience necessary
- **Fun, Supportive Environment** to learn, grow, and perform
- **Inclusive Community**— make new friends and be part of something special!
- **Low Cost** - just £2 per week

Available Brass Instruments:

Cornet, Trombone, Tenor Horn, Baritone, Euphonium, Eb and Bb Bass

Why Join Us?

- Build confidence while mastering a new skill
- Perform at local events and celebrations
- Enjoy the thrill of playing in a band

For more information: wbjuniors@outlook.com
Rehearsals/lessons take place on a Monday night between 6-7:30pm at our bandroom on the site of Thomas Adams School.

Making Music, Making memories



Worried about your child's health?

Think 'Pharmacy First'

You can now get treatment for a variety of common conditions and minor illnesses from your local community pharmacy.

Your pharmacy can help with:

- Earache (ages 1-17)
- Infected insect bites (from age 1)
- Impetigo (from age 1)
- Sore throat (from age 5)
- Hay fever (all ages)
- Conjunctivitis (all ages)

If you don't know whether a pharmacist can help with what you need, give them a call first or just pop in.

If you get a prescription through your pharmacy, you'll never pay more than if you had seen your GP.