

Dear Parents/Carers

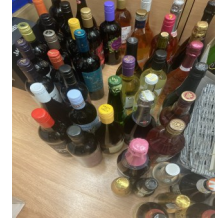
WHIXALL SCHOOL NEWS

We demonstrate our Values of **respect, caring, supportiveness, tolerance, perseverance, forgiveness, and trust**, at Whixall C.E. Primary School in all that we strive to do each day.



Christmas Fair

Thank you so much to everyone for your Amazing support for the Christmas Fair. You raised a fantastic £1,982 for our school. We will let you now what we plan to spend the money on.



Remembrance

We are so proud of the respect shown by all of our children when we visited the Memorial on Tuesday.

Diary Dates

Tuesday 18th November	Dragonfly Parents Phonics workshop at 9.00 a.m. (please let the school office know if you are able to attend this workshop)
Wednesday 19th November	Skylark and Mayfly Class visit to Cosford— Families have already received a letter regarding this visit.
Monday 24th November	Individual photographs
Sunday 30th November	Christingle Service (further details to follow)
Monday 1st December	Advent Journey Day
Tuesday 9th December	Carol Service 9.30 a.m.
Wednesday 10th December	Robin and Red Kite Visit to Tatton Park— Parents have already received a letter regarding this
Tuesday 16th December	Christmas Lunch and Parties
Friday 19th December	Theatre visit Break up for Christmas Holidays

Christmas Lunch

Christmas Lunch is on Tuesday 16th December. Nursery children who do not attend Nursery on Tuesdays are very welcome to attend for lunch and the afternoon session but can we please ask that you let the school office know. School will be paying for Christmas lunch for all of the children but can we please ask that you let the school office know if your child will **not** be having Christmas lunch by Monday 1st December.

If you are concerned about someone's safety

In an emergency dial 999, but for other calls to the police please ring 101. To report a safeguarding concern by phone ring the **First Point of Contact team** on 0345 678 9044 Monday to Thursday, 9am to 5pm, and Friday 9am to 4pm. If you have urgent adult safeguarding concerns outside of these hours, please phone the **Emergency Social Work Duty Team** on 0345 678 9040.

PE

Please find below the days that each class will have their PE lessons. Children will need to come into school in their PE kits. We apologise that there has been some changes to PE times but hopefully, these will now be set going forward.

Monday—Bumblebee Class (Nursery), Dragonfly Class (Reception) and Robin Class (Year 3)

Tuesday—Mayfly Class (years 1 and 2), Skylark Class (Year 1), Peregrine Class (Years 5 and 6)

Wednesday— Red Kite Class (Year 4) and Peregrine Class (Years 5 and 6)

Thursday—Skylark Class (Year 1), Mayfly Class (Years 1 and 2) and Robin Class (Year 3),

Friday — Red Kite Class (Year 4), Bumblebee Class (Nursery), Dragonfly Class (Reception) and Peregrine Class (Years 5 and 6)

If all children could bring their outdoor learning clothes into school please and leave them in school, that would be appreciated. It would also be appreciated if all children could bring a pair of wellies into school please .

Remembrance

Our visit to the War Memorial is always such a special occasion in our school calendar. This year, the children's thoughtfulness and respect was no exception. We were really proud of the respect that the children demonstrated.



*** School Admissions Dates ***

Applications for Reception School Places

Children born between 1 September 2021 and 31 August 2022 can start primary school from September 2026

Applications can be made online from Monday 3rd November 2025 to 15th January 2026.

To apply please visit: <http://www.shropshire.gov.uk/schooladmissions>

click on: Apply to start or transfer school

then click on: Starting infant or primary school

If you have any queries please contact the office.

Coat, hat, gloves and wellies



Can we please ask that during the cold weather your child brings a coat, hat and gloves to school each day. If your child does not already have a pair of wellies in school (labelled with their name please) can we ask that you send a pair in that can be left in school.

We like to take the children out at playtimes whenever the weather allows.

Thank you.

Child Absence

Please telephone school (01948 880330) by 9.30am if your child is unwell and will not be attending that day. If leaving a message, can you please provide the exact reason why your child is absent. If we have not heard from you by 9.30am we will text you and then follow-up with a telephone call if we have still not heard from you by lunchtime.

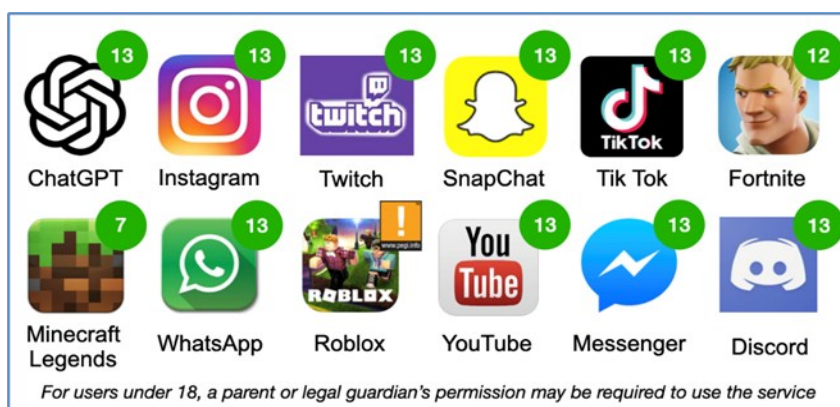
We shall also be contacting parents of Nursery children who do not attend, for whatever reason, on days that we are expecting them. This is a health and wellbeing safeguarding check.

Age Ratings

Age ratings exist to help protect your child by showing whether content is suitable for your child's age. Whether your child is viewing films, accessing apps, playing games online or using social media— make sure you check the age rating first to see if your child is old enough.

Popular apps and their age ratings

Here are the age ratings of some of the more popular apps that young people are currently accessing. In addition to checking the age rating, the likes of PEGI (Pan European Game Information) provide further content descriptors, which will give you an indication of the type of content that your child might encounter e.g. violence or bad language within a game.



What else should I review?

It is important to note that whilst age ratings do allow you to see if something may be appropriate for your child, **it is also vital to review the content yourself.** This will allow you to make an informed decision as to whether it is suitable for your child to access and if it is necessary to apply further parental controls. For example, does it include the ability to communicate with others and are in game/app purchases available?

What else can I do?

Explain the importance of age ratings to your child and how they protect them.

Go online together to see what your child is accessing.

Set up parental controls on your broadband, devices and on any individual apps that your child is using. This will reduce the chances of them accessing or viewing anything unsuitable.

Chat to your child regularly about what they are doing online and remind your child that if anything is worrying them then they should talk to you or another trusted adult.

Online Roasting

Have you heard of this term? It has been around a while now, but Online Roasting refers to a form of cyberbullying. Roasting typically involves making fun and insulting somebody, sometimes with their consent and other times not.

What can I do?

- Talk to your child about what online roasting is, ask them if they have ever experienced it and what they think about it.
- If this has negatively impacted your child then save any evidence and involve the school (if appropriate). Childline also offer further advice and support in relation to cyberbullying.

Further information

Find out more here:

<https://www.bark.us/blog/online-roasting-signs-cyberbullying/>

Santa Cruises

Saturday 6th and Sunday 7th December

Saturday 13th and Sunday 14th December

A cruise on the
Shropshire Lady and a
visit from Santa

Festive refreshments,
mince pies and
mulled wine

Tickets £12.50

includes a present for each child

To book:

santa@lyneal-trust.org.uk

or 01948 710708

Find us at

Lyneal Wharf, Ellesmere SY12 0LQ



Lyneal Trust
Charity No 516224



Discover our FREE rail safety videos and keep your children safe by visiting railsafefriendly.com

THE RAIL SAFE FRIENDLY PROGRAMME

The Rail Safe Friendly programme has educated over **3 million young people** on the dangers of the railways.



SCAN ME

DON'T LET YOUR CHILDREN BECOME THE NEXT



"I implore you to listen to Harrison's story"

Simon Frazer, Principal,
Gulsborough Academy



Are you a parent carer or a young person with special needs or learning differences (with or without a diagnosis)?

Here's where you can join us: Natter Matters sessions and family events

Natter Matters

Monday 8th September, 9.30am-11.30am Wem Town Hall

Stories and Crafts - Stories told by Jake Evans

Saturday 13th September, 1.30pm-3.30pm Wem Town Hall

Stories and Crafts - Stories told by Jake Evans

Saturday 11th October, 1.30pm-3.30pm Wem Town Hall

Natter Matters -Abi from PACC-Community Navigator Service

Monday 13th October, 9.30am-11.50am

Meeting Room, Wem Town Hall

Natter Matters

Monday 10th November, 9.30am-11.30am Wem Town Hall

Swimming - Whitchurch Swimming Pool

Date TBC (November), Sunday 11am-12pm

Natter Matters

Monday 8th December, 9.30am-11.30am Wem Town Hall

Please book on to events via the Wem SEN Hub Facebook Page

**WEM TOWN HALL
SEN EVENTS AND ACTIVITIES**



Relaxed Screening of Hotel Transylvania

Tuesday 28th October, 1.30pm - Wem Town Hall

Wem Town Hall Halloween Crafts SEN Session

Friday 31st October 1pm-2pm

Relaxed Screening of Polar Express (PJs Welcome)

Saturday 20th December, 1.30pm, Wem Town Hall

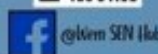
please book for these events directly with Wem Town Hall

You can also find us at

Wem Market every Thursday until 9th October

Wem Car boot - Sunday 14th September
9.00am-12.00pm Wem Recreational Ground

Quiet Space during
Wem Christmas Lights and Festival
1pm-6pm, Wem Town Hall



**Events coming in the
New Year**

The Animal Family
and
Keystage Circus

**Unlock your
musical potential
with Wem Jubilee
Training Band!**

Would you like to learn to play a brass instrument? Whether you're a complete beginner or looking to sharpen your skills, the Wem Jubilee Training Band is the place for you.

What We Offer:

- **Expert Training** from passionate and experienced musicians
- **Instruments and Music Provided**
- **All Ages Welcome** Adults and children are welcome (from 8 upwards) — no experience necessary
- **Fun, Supportive Environment** to learn, grow, and perform
- **Inclusive Community**— make new friends and be part of something special!
- **Low Cost** - just £2 per week

Available Brass Instruments:

Cornet, Trombone, Tenor Horn, Baritone, Euphonium, Eb and Bb Bass

Why Join Us?

- Build confidence while mastering a new skill
- Perform at local events and celebrations
- Enjoy the thrill of playing in a band

For more information: wfbjuniors@outlook.com
Rehearsals/lessons take place on a Monday night
between 6-7:30pm at our bandroom on the site
of Thomas Adams School.

Making Music, Making memories



Integrated
Care System
Shropshire, Telford and Wrekin



Shropshire, Telford
and Wrekin



Worried about your child's health?

Think 'Pharmacy First'

You can now get treatment for a variety of common conditions and minor illnesses from your local community pharmacy.

Your pharmacy can help with:

- Earache (ages 1-17)
- Infected insect bites (from age 1)
- Impetigo (from age 1)
- Sore throat (from age 5)
- Hay fever (all ages)
- Conjunctivitis (all ages)

If you don't know whether a pharmacist can help with what you need, give them a call first or just pop in.

If you get a prescription through your pharmacy, you'll never pay more than if you had seen your GP.

Support for parent carers of children with SEND

Shropshire's Local Offer

Having access to good quality information to help you understand the world of SEND is important when making decisions about your child's life. This is where websites such as the [Shropshire's SEND Local Offer](http://www.shropshire.gov.uk/the-send-local-offer/) can help you.

The SEND Local Offer

Lots of information and support for children and young people with SEND and their families, including:

- Education
- Health and wellbeing
- Family support
- Social care
- Preparing for adulthood
- Early help
- Things to do
- Education, health and care plan (EHCP)
- Travel and transport
- Financial support

localOffer@shropshire.gov.uk 0345 678 9063
www.shropshire.gov.uk/the-send-local-offer/



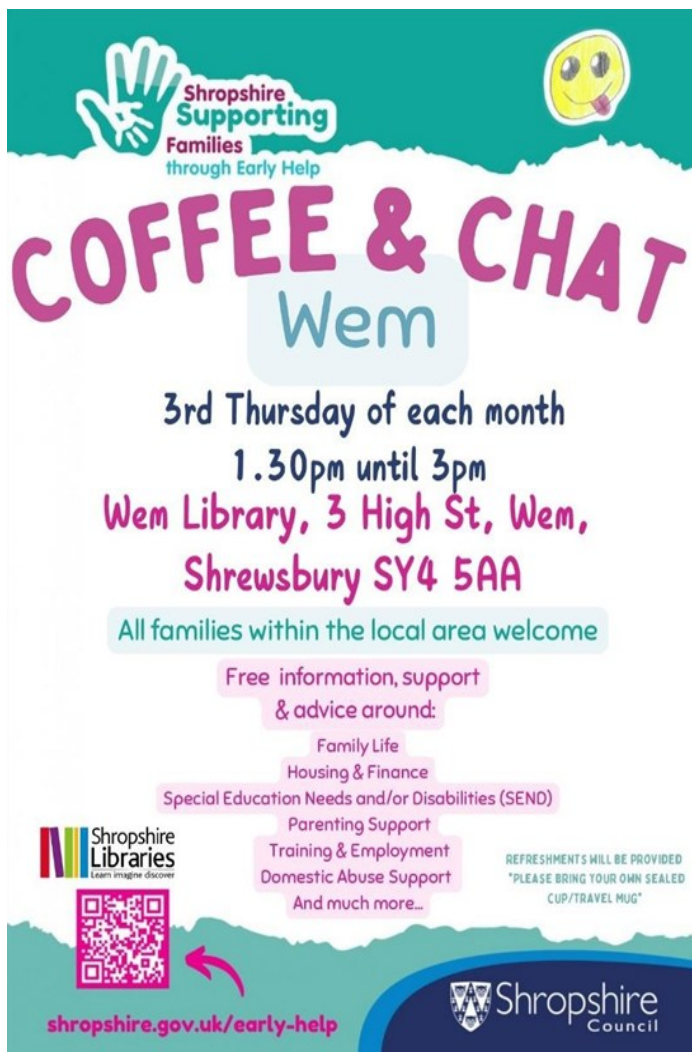
If you need help accessing the Local Offer please speak to your school or local library.



all about family

www.allabout-family.co.uk/national-magazine

A digital newsletter with lots of information to share with your children.



Shropshire Supporting Families through Early Help

COFFEE & CHAT

Wem


3rd Thursday of each month
1.30pm until 3pm
Wem Library, 3 High St, Wem,
Shrewsbury SY4 5AA

All families within the local area welcome

Free information, support & advice around:

- Family Life
- Housing & Finance
- Special Education Needs and/or Disabilities (SEND)
- Parenting Support
- Training & Employment
- Domestic Abuse Support
- And much more...

Shropshire Libraries Learn imagine discover



shropshire.gov.uk/early-help

Shropshire Council

REFRESHMENTS WILL BE PROVIDED
PLEASE BRING YOUR OWN SEALED CUP/TRAVEL MUG

WEM SCOUTS

CHRISTMAS TREES

Website; www.wemscoutschristmastrees.co.uk

Email; wemscoutschristmastrees@gmail.com

Facebook; Wem Scouts Christmas Trees

BEAUTIFUL FRESH, LOCAL
NORDMANN FIR TREES,
HANDMADE NATURAL
WILLOW WREATHS &
QUALITY TREE STANDS

Order online, or see
us at our sales events;

29th Nov;
Wem Christmas
festival 1pm-6pm

6th & 13th Dec;
Outside CoOp
10am-2pm

FREE
LOCAL
DELIVERY!