

Dear Parents/Carers

WHIXALL SCHOOL NEWS

We demonstrate our Values of **respect, caring, supportiveness, tolerance, perseverance, forgiveness, and trust**, at Whixall C.E. Primary School in all that we strive to do each day.

BINGO

A bingo event has been booked in aid of our school on Monday 6th October at 7.00 p.m. at Prees Cricket & Recreation Club, Brades Road, Prees, Shropshire, SY13 2DX—everyone is welcome and we do hope that you will be able to support us at this event. Donations of prizes would be very gratefully received, items such as bottles, chocolates, smellies etc—please bring to the school office.

Thank you for your continued support.

Drop off and collection

Our drop off and collection system is designed to ensure that everyone is as safe as possible. If the system is not followed then it puts adults and children in danger. If cars park on the road, it blocks the view of other cars trying to follow the system. If families are parking on the road and walking their children to and from the gate, then there is a risk of someone being injured because they will be walking within the area of moving cars. Can we please urge everyone to follow our system to keep everyone safe. If other family members drop off or collect, then we would be grateful if you could explain to them that parking on the road as part of the queuing system is not an option.

Drop Off

Just a reminder about the arrangements for our morning drop off system.

The gate at the top of the layby is open at 8.20 a.m. where a member of staff is on duty. Can we please ask that children are dropped off as quickly and safely as possible to ensure that waiting time is kept to a minimum.

At 8.30 a.m. the second gate is opened, please do not stop at the second gate if there is space in front of you to wait to drop your child off at the first gate.

Please do not park on the road to walk your child into school.

If your child is in Nursery and you wish to park on the road to walk your child to the playground gate, then can we please ask that you arrive after 8.45 a.m.

A reminder that school starts at 8.45 a.m. and Nursery starts at 9.00 a.m. although we are happy for Nursery children to be dropped off with siblings.

We do understand that families need to drop off promptly to get to work and thank you for your patience.

Collection

At the end of the school day we ask that everyone joins the queuing system. The vehicles in the layby should have their engines turned off please and then adults get out of the vehicles—your child will then be sent to you. When one line of cars drives off then another line of cars drives into the layby and repeats the collection.

Please do not park your car on the road and walk to the gate. This is putting everyone in the vicinity at risk of an accident.

We really appreciate everyone's support with this to keep everyone safe.

Meet the Teacher

On Monday 22nd September at 3.30 p.m. there is an opportunity for families to come into school to visit your child's classroom and to meet their teacher. There is also an opportunity to find out a little more about the organisation for the year.

We hope that you will be able to join us. If your child is in more than one class, you will be very welcome to visit both rooms. The meetings are for adults only but your child will be welcome to join after school club. Staff will be available until 4.30 p.m.

PE

Please find below the days that each class will have their PE lessons. Children will need to come into school in their PE kits.

Tuesdays—Mayfly Class (years 1 and 2), Bumblebee and Dragonfly Classes (Nursery and Reception) , Skylark Class (Year 1)

Wednesdays— Red Kite Class—Year 4.

Thursdays—Bumblebee and Dragonfly Classes (Nursery and Reception), Skylark Class (Year 1) Mayfly Class (Years 1 and 2),

Robin (Year 3) and Peregrine (Years 5 and 6) - swimming—a letter has been sent home regarding the arrangements for swimming

Friday — Red Kite Class—Year 4.

If children could bring their outdoor learning clothes into school please and leave them in school, that would be appreciated. It would also be appreciated if all children could bring a pair of wellies into school please .

Tuckshop

Toast is available to the children every playtime at a cost of 10 p per slice and 5 p for Nursery and reception children—this is payable on ParentPay. Children in Reception, Key Stage 1 also have free fruit on a daily basis. Children are welcome to bring healthy snacks into school such as raw vegetables, fruit etc.to eat at playtimes.

Child Absence

Please telephone school (01948 880330) by 9.30am if your child is unwell and will not be attending that day. If leaving a message, can you please provide the exact reason why your child is absent. If we have not heard from you by 9.30am we will text you and then follow-up with a telephone call if we have still not heard from you by lunchtime.

We shall also be contacting parents of Nursery children who do not attend, for whatever reason, on days that we are expecting them. This is a health and wellbeing safeguarding check.

Reading

As ever we really appreciate your support in your child's reading development. We understand that it is difficult to hear your child read every day, but if you could try to build in some time during the course of the week to hear your child read as often as possible or to talk with them about their reading that would be really beneficial. Reading books will be sent home with your child's reading record diary. Please record every time you hear your child read. We shall request your child brings their reading record diary into school so that bookmarks and prizes can be awarded.

Thank you.

Harvest Service

Our Harvest Service is on Friday 26th September at St Mary's Church — everyone is welcome to attend. We will be asking for donations of non perishable food e.g. tins and packets to donate to the Whitchurch Food bank. There will be a collection box in school, so please send any items you wish to donate into school by Thursday 25th September.

During the service, there will be a voluntary collection, donations will be sent to the Farm Crisis Network.

Thank you for your support.
Whitchurch Food Bank

- JARS OF COFFEE (LARGE AND SMALL)
- TINS OF CUSTARD
- TINS OF FRUIT
- JARS OF JAM
- SPONGE PUDDINGS
- POT NOODLES
- LONG-LIFE FRUIT JUICE
- SEMI-SKIMMED OR WHOLE LONG-LIFE MILK
- TINS OF CARROTS
- PORRIDGE
- RICE PUDDING
- TEA
- WASHING-UP LIQUID
- BOILED RICE 500 GRAMS AND 1KG PACKETS
- CHOCOLATE SNACK BARS
- CHOCOLATE AND SWEETS
- JARS OF PASTA SAUCE
- TINNED HAM
- WASHING POWDER/LIQUID
- SHOWER GEL



American Flag Football with Shropshire Revolution

- Telford College Astro Dome
- 6 till 7pm - Tuesday 9th & 23rd of September
- Ages 7-11 & 12-14

Discover one of the UK's fastest growing sports with an NFL Flag rookie session! Whether you're new to the game or just curious this is your chance to get involved. FUN, FAST, INCLUSIVE – no experience needed. If these sessions take off, you could become an important player in the very first Flag team in Shropshire.

Come join us at our taster session and become part of the journey!

Support for parent carers of children with SEND

Shropshire's Local Offer

Having access to good quality information to help you understand the world of SEND is important when making decisions about your child's life. This is where websites such as the [Shropshire's SEND Local Offer](#) can help you.

The SEND Local Offer

Lots of information and support for children and young people with SEND and their families, including:

- Education
- Health and wellbeing
- Family support
- Social care
- Preparing for adulthood
- Early help
- Things to do
- Education, health and care plan (EHCP)
- Travel and transport
- Financial support

local.offer@shropshire.gov.uk 0345 678 9063
www.shropshire.gov.uk/the-send-local-offer/



If you need help accessing the Local Offer please speak to your school or local library.



Mobile Police Surgery in your area....

Drop in to speak to Whitchurch Safer Neighbourhood Team (SNT) officers at the mobile police station on:

Thursday 18th September - Tilstock Village Hall car park - 6-8pm

Friday 19th September - Whixall Social Centre car park - 6-8pm

Saturday 20th September - Edstaston Village Hall car park - 6-8pm

We will be on hand to listen to any concerns and to offer crime prevention advice.

Everyone is welcome and it would be great to see you there.

For more information please contact PCSO Jamie Robinson on 07967 301 147

Shropshire Supporting Families through Early Help

COFFEE & CHAT

Wem

3rd Thursday of each month
1.30pm until 3pm
Wem Library, 3 High St, Wem,
Shrewsbury SY4 5AA

All families within the local area welcome

Free information, support & advice around:

- Family Life
- Housing & Finance
- Special Education Needs and/or Disabilities (SEND)
- Parenting Support
- Training & Employment
- Domestic Abuse Support
- And much more...

REFRESHMENTS WILL BE PROVIDED
"PLEASE BRING YOUR OWN SEALED CUP/TRAVEL MUG"

shropshire.gov.uk/early-help

Integrated Care System
Shropshire, Telford and Wrekin

NHS
Shropshire, Telford and Wrekin

Worried about your child's health?

Think 'Pharmacy First'

You can now get treatment for a variety of common conditions and minor illnesses from your local community pharmacy.

Your pharmacy can help with:

- Earache (ages 1-17)
- Infected insect bites (from age 1)
- Impetigo (from age 1)
- Sore throat (from age 5)
- Hay fever (all ages)
- Conjunctivitis (all ages)

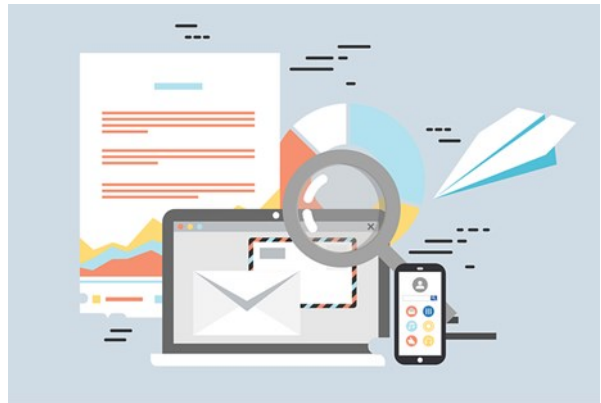
If you don't know whether a pharmacist can help with what you need, give them a call first or just pop in.

If you get a prescription through your pharmacy, you'll never pay more than if you had seen your GP.

Online Safety Act

What is the Online Safety Act?

The Online Safety Act 2023 is a set of laws introduced to protect children and adults online. Ofcom is the regulator for online safety in the UK, responsible for ensuring companies follow the new rules. As part of this role, Ofcom have designed the Children Codes of practice, which came into force in July 2025. The codes outline what all online services likely to be accessed by children must do to protect children online, for example:



Enforce age limits.

Protect children from accessing harmful or age-inappropriate content. This includes content relating to self-harm and eating disorders.

Ensure users can easily report harmful content.

Ofcom has the power to enforce the rules as well as issue fines if companies fail to comply. You can find out more here: <https://www.ofcom.org.uk/online-safety/protecting-children/new-rules-for-a-safer-generation-of-children-online>

How will it help to protect my child?

One of the main purposes of the Act is to protect children online. Ofcom has published information on how they are helping children to be safer online. The first link is a guide for parents, which also includes a section on what you can do as a parent. You can access this information here:

- <https://www.ofcom.org.uk/online-safety/protecting-children/how-ofcom-is-helping-children-to-be-safer-online-a-guide-for-parents>
- <https://www.ofcom.org.uk/online-safety/protecting-children/how-the-online-safety-act-will-help-to-protect-children>

Further information

- Online Safety Act: explainer: <https://www.gov.uk/government/publications/online-safety-act-explainer/online-safety-act-explainer>

Online Safety Act: explainer:

<https://www.gov.uk/government/publications/online-safety-act-explainer/online-safety-act-explainer>

Test your knowledge: Online Scams

Childnet have created a quiz for 9-13 year-olds that includes a range of potential online scams, as well as tips to help your child protect themselves online. Find out more here:

<https://www.childnet.com/blog/test-your-knowledge-about-online-scams-with-our-quiz-for-9-13-year-olds/>