

Dear Parents/Carers

WHIXALL SCHOOL NEWS

We demonstrate our Values of **respect, caring, supportiveness, tolerance, perseverance, forgiveness, and trust**, at Whixall C.E. Primary School in all that we strive to do each day.

BINGO

A bingo event has been booked in aid of our school on Monday 13th October at 7.00 p.m. at Prees Cricket & Recreation Club, Brades Road, Prees, Shropshire, SY13 2DX—everyone is welcome and we do hope that you will be able to support us at this event. Donations of prizes would be very gratefully received, items such as bottles, chocolates, smellies etc—please bring to the school office.

Thank you for your continued support.

Drop off and collection

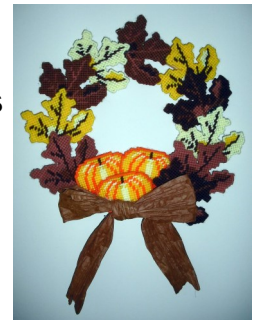
Our drop off and collection system is designed to ensure that everyone is as safe as possible. If the system is not followed then it puts adults and children in danger. If cars park on the road, it blocks the view of other cars trying to follow the system. If families are parking on the road and walking their children to and from the gate, then there is a risk of someone being injured because they will be walking within the area of moving cars. Can we please urge everyone to follow our system to keep everyone safe. If other family members drop off or collect, then we would be grateful if you could explain to them that parking on the road as part of the queuing system is not an option.

Thank you so much to everyone who is following our system, we really appreciate your support.

Harvest Service

Thank you so much to everyone who supported our Harvest Service on Friday. We do so appreciate everyone's support. The food donations have now been delivered to Whitchurch Food Bank and the collection will be sent to the Farming Community Network. We will let you know how much was raised.

Thank you so much for your continued support.



Collection from Clubs

Thank you to everyone who has informed us about the difficulties you are having collecting your child from club if it is before 4.20 p.m.

If your child is attending club and you wish to collect them before the end of club, then please go to gate that is opposite the main entrance to school. There is a buzzer to the right of the gate that is explicitly for clubs. If you press the button a member of staff will have the corresponding handset and you will be able to let them know of your arrival. Your child will then be brought to the gate or the main door.

If your child is in breakfast club or late club, then please use the same system to notify staff of your arrival.

If the gate has closed after home time and your child is not club then please use come to the gate as indicated above and use the buzzer system to alert staff of your arrival.

Meet the Teacher

Thank you so much to everyone who came to 'meet the teacher'. It was lovely to see so many families join us for this event. If you were unable to join us then some information from the session has been sent home with your child. If you have not received this, then please contact the school office.

PE

Please find below the days that each class will have their PE lessons. Children will need to come into school in their PE kits.

Tuesdays—Mayfly Class (years 1 and 2), Bumblebee and Dragonfly Classes (Nursery and Reception) , Skylark Class (Year 1)

Wednesdays— Red Kite Class—Year 4.

Thursdays—Bumblebee and Dragonfly Classes (Nursery and Reception), Skylark Class (Year 1) Mayfly Class (Years 1 and 2),

Robin (Year 3) and Peregrine (Years 5 and 6) - swimming—a letter has been sent home regarding the arrangements for swimming

Friday — Red Kite Class—Year 4.

If all children could bring their outdoor learning clothes into school please and leave them in school, that would be appreciated. It would also be appreciated if all children could bring a pair of wellies into school please .

Tuckshop

Toast is available to the children every playtime at a cost of 10 p per slice and 5 p for Nursery and reception children—this is payable on ParentPay. Children in Reception, Key Stage 1 also have free fruit on a daily basis. Children are welcome to bring healthy snacks into school such as raw vegetables, fruit etc.to eat at playtimes.

Child Absence

Please telephone school (01948 880330) by 9.30am if your child is unwell and will not be attending that day. If leaving a message, can you please provide the exact reason why your child is absent. If we have not heard from you by 9.30am we will text you and then follow-up with a telephone call if we have still not heard from you by lunchtime.

We shall also be contacting parents of Nursery children who do not attend, for whatever reason, on days that we are expecting them. This is a health and wellbeing safeguarding check.

If you are concerned about someone's safety

In an emergency dial 999, but for other calls to the police please ring 101. To report a safeguarding concern by phone ring the **First Point of Contact team** on 0345 678 9044 Monday to Thursday, 9am to 5pm, and Friday 9am to 4pm. If you have urgent adult safeguarding concerns outside of these hours, please phone the **Emergency Social Work Duty Team** on 0345 678 9040.

Coverstar

Coverstar say they are “the safe TikTok alternative.” They state, “there is no specific age limitation...however, if you are under the age of 13, you must obtain parental consent.” Users can post, comment and livestream.

Whilst Coverstar does not include private messaging, users can still interact via public comments. Coverstar does use moderation tools to scan all user-generated content. It is also important to be aware that Coverstar does allow in-app purchases ranging from £0.99 - £59.99.

If your child is using this app, ensure they know how to use the reporting tools. Bark provide a full review of Coverstar here:

<https://www.bark.us/app-reviews/apps/coverstar-app-review>.

Roblox: Grow a Garden

Roblox is a platform consisting of a collection of games. Grow a Garden is one of the latest games available on Roblox and is extremely popular. The game is labelled as ‘minimal’ for content maturity, which Roblox define as “may contain occasional mild violence, light unrealistic blood, and/or occasional mild fear.” Roblox believe that the game play is suitable for everyone. However, as the game is on Roblox, it is important to be aware of the following:

- **Chat** – strangers can interact with your child.
- **In-game purchases** – this game does include in-game purchases.
- **Screentime** – set limits for how long your child is playing.

A lot of the content on Roblox is user generated, which may mean not all games will be suitable for your child to view/play. If your child is playing Roblox, it is important to monitor what your child is accessing, ensure they know how to use any reporting tools and set up appropriate parental controls.

Further information

<https://en.help.roblox.com/hc/en-us/articles/30428310121620-Parental-Controls-Overview>

Poster designed by Eliza

KIDZ CAFE!

Opening 9th October 2025

Time : 3.30 - 5.00 pm

Tasky breaks - milkshakes, brownies
- Toast + toppings

Legos, games, crafts - share + play

🎵 Music Playing 🎵

Perfect for families and children



EVERY
THURSDAY



October Halloween Holiday Clubs

27th to 31st October, 9am to 3pm

For children ages 5 to 11, our holiday clubs are open to all abilities with a focus on fun, sports, and some Halloween themed activities! Groups of mixed age and ability.

at **The Croud Meadow, SY2 6ST & Ludlow Football Stadium, SY8 2BN**

Scan the QR code or visit our website to book a single day for £18.

foundationstfc.co.uk/fun

Get in touch

E: admin@foundationstfc.co.uk T: 01743 289177 opt 6



Unlock your musical potential with Wem Jubilee Training Band!

Would you like to learn to play a brass instrument? Whether you're a complete beginner or looking to sharpen your skills, the Wem Jubilee Training Band is the place for you.

What We Offer:

- **Expert Training** from passionate and experienced musicians
- **Instruments and Music Provided**
- **All Ages Welcome** Adults and children are welcome (from 8 upwards) — no experience necessary
- **Fun, Supportive Environment** to learn, grow, and perform
- **Inclusive Community** — make new friends and be part of something special!
- **Low Cost** - just £2 per week

Available Brass Instruments:

Cornet, Trombone, Tenor Horn, Baritone, Euphonium, Eb and Bb Bass

Why Join Us?

- Build confidence while mastering a new skill
- Perform at local events and celebrations
- Enjoy the thrill of playing in a band

For more information: wbjuniors@outlook.com
Rehearsals/lessons take place on a Monday night
between 6-7:30pm at our bandroom on the site
of Thomas Adams School.

Making Music, Making memories

Support for parent carers of children with SEND

Shropshire's Local Offer

Having access to good quality information to help you understand the world of SEND is important when making decisions about your child's life. This is where websites such as the [Shropshire's SEND Local Offer](http://www.shropshire.gov.uk/the-send-local-offer/) can help you.

The SEND Local Offer



Lots of information and support for children and young people with SEND and their families, including:

- Education
- Health and wellbeing
- Family support
- Social care
- Preparing for adulthood
- Early help
- Things to do
- Education, health and care plan (EHCP)
- Travel and transport
- Financial support

localOffer@shropshire.gov.uk 0345 678 9063
www.shropshire.gov.uk/the-send-local-offer/



If you need help accessing the Local Offer please speak to your school or local library.



Are you a parent carer or a young person with special needs or learning differences (with or without a diagnosis)?

Here's where you can join us: Natter Matters sessions and family events

Natter Matters
Monday 8th September, 9.30am-11.30am Wem Town Hall

Stories and Crafts - Stories told by Jake Evans
Saturday 13th September, 1.30pm-3.30pm Wem Town Hall

Stories and Crafts - Stories told by Jake Evans
Saturday 11th October, 1.30pm-3.30pm Wem Town Hall

Natter Matters -Abi from PACC-Community Navigator Service
Monday 15th October, 9.30am-11.30am Meeting Room, Wem Town Hall

Natter Matters
Monday 10th November, 9.30am-11.30am Wem Town Hall

Swimming - Whitchurch Swimming Pool
Date TBC (November), Sunday 11am-12pm

Natter Matters
Monday 8th December, 9.30am-11.30am Wem Town Hall

Please book on to events via the Wem SEN Hub Facebook Page

WEM TOWN HALL SEN EVENTS AND ACTIVITIES

Relaxed Screening of Hotel Transylvania
Tuesday 28th October, 1.30pm - Wem Town Hall

Wem Town Hall Halloween Crafts SEN Session
Friday 31st October 1pm-2pm

Relaxed Screening of Polar Express (PJs Welcome)
Saturday 20th December, 1.30pm, Wem Town Hall

please book for these events directly with Wem Town Hall

You can also find us at

Wem Market every Thursday until 9th October

Wem Car boot - Sunday 14th September 9.00am-12.00pm Wem Recreational Ground

Quiet Space during Wem Christmas Lights and Festival 1pm-6pm, Wem Town Hall

@Wem SEN Hub

Events coming in the New Year

The Animal Family and Keystage Circus

COFFEE & CHAT

Wem

3rd Thursday of each month
1.30pm until 3pm
Wem Library, 3 High St, Wem,
Shrewsbury SY4 5AA

All families within the local area welcome

Free information, support & advice around:

- Family Life
- Housing & Finance
- Special Education Needs and/or Disabilities (SEND)
- Parenting Support
- Training & Employment
- Domestic Abuse Support
- And much more...

REFRESHMENTS WILL BE PROVIDED
PLEASE BRING YOUR OWN SEALED CUP/TRAVEL MUG

shropshire.gov.uk/early-help

Worried about your child's health?

Think 'Pharmacy First'

You can now get treatment for a variety of common conditions and minor illnesses from your local community pharmacy.

Your pharmacy can help with:

- Earache (ages 1-17)
- Infected insect bites (from age 1)
- Impetigo (from age 1)
- Sore throat (from age 5)
- Hay fever (all ages)
- Conjunctivitis (all ages)

If you don't know whether a pharmacist can help with what you need, give them a call first or just pop in.

If you get a prescription through your pharmacy, you'll never pay more than if you had seen your GP.