

*Dear Parents/Carers***WHIXALL SCHOOL NEWS**

We demonstrate our Values of **respect, caring, supportiveness, tolerance, perseverance, forgiveness, and trust**, at Whixall C.E. Primary School in all that we strive to do each day.

Well done to all of our children who took part in Clive Cross Country. Everyone demonstrated fantastic perseverance and determination and we are so proud of you all.

**PE**

- Monday – Bumblebee Class (Nursery), Dragonfly Class (Reception) Robin (Year 3), Skylark Class (Year 1), Mayfly Class (Year 1 and Year 2), Peregrine (Years 5 and Year 6)
- Wednesday - Robin Class (Year 3), Red Kite (Year 4)
- Thursday– Skylark Class (Year 1), Mayfly Class (Years 1 and 2), Peregrine (Year 5 and Year 6)
- Friday – Bumblebee Class (Nursery), Dragonfly Class (Reception) Red Kite Class (Year 4)

**Children need to come to school dressed in their PE kits please. Please note that swimming has now finished for Robin and Peregrine Classes. Swimming will take place for all other classes in the Summer Term.**

**Dates**

|                                      |  |
|--------------------------------------|--|
| Monday 23rd March                    | Reading the Game for children in Robin Class<br>Easter Journey Day |
| Tuesday 24th March                   | Saltmine Theatre Company visiting school.                          |
| Wednesday 25th March                 | Easter Service at 9.30 a.m. at St Mary's Church                    |
| Friday 27th March                    | Break up for the Easter holidays                                   |
| Monday 30th March–Thursday 2nd April | Holiday Club   |
| Tuesday 7th April–Thursday 9th April | Holiday Club   |
| Monday 13th April                    | Children return to school  |

**If you are concerned about someone's safety**

In an emergency dial 999, but for other calls to the police please ring 101. To report a safeguarding concern by phone ring our **First Point of Contact team** on 0345 678 9044 Monday to Thursday, 9am to 5pm, and Friday 9am to 4pm. If you have urgent adult safeguarding concerns outside of these hours, please phone the **Emergency Social Work Duty Team** on 0345 678 9040.

## Quiz Night

Our grateful thanks to the Dicken Arms for allowing us to raise funds through one of their Quiz Nights. Please see page 3 for more details.

If you are able to donate a raffle prize for the event, then we would be very grateful. Please send any donated prizes into the school office.

Your child has brought some tickets home today to help to support the event—if you are able to sell any tickets it would be very much appreciated.

There are some great prizes:  
Please see page 3 for more details.

Many thanks for your support.

## Comic Relief - Red Nose Day 2026

Thank you very much for everyone's support with Comic Relief on Friday, the children looked amazing. You raised a fantastic £125 for Comic Relief.

Thank you for your continued support.



## MENINGITIS

If you are at all worried or concerned about this there is information at

NHS: <https://www.nhs.uk/conditions/meningitis/>

The Meningitis Research Foundation: [www.meningitis.org](http://www.meningitis.org) Helpline UK 080 8800 3344

Meningitis Now: [www.meningitisnow.org](http://www.meningitisnow.org) Helpline 0808 80 10 388

or [helpline@meningitisnow.org](mailto:helpline@meningitisnow.org)

UKHSA blog post: [Meningitis\\_B\\_outbreak: what you need to know -- UK Health Security Agency](#)

## Our Easter Service

We would like to invite you to join us for  
our Easter Service  
at St Mary's Church on  
Wednesday 25th March at 9.30 a.m.  
Everyone welcome



## Holiday Club

Holiday club is running again during the Easter holidays on  
Monday 30th March, Tuesday 31st March, Wednesday 1st April  
and Thursday 2nd April and


Tuesday 7th April, Wednesday 8th April and Thursday 9th April  
for children aged 3 - 11 years.

Cost £12 per day from 9 a.m. until 3 p.m.

Children will need to bring a packed lunch and a water bottle please.

Bookings must be made on ParentPay. Parents/Carers using the Childcare Scheme/ Vouchers should book by emailing [admin@whixall.shropshire.sch.uk](mailto:admin@whixall.shropshire.sch.uk)





**WHIXALL C E  
PRIMARY SCHOOL  
FUNDRAISER**

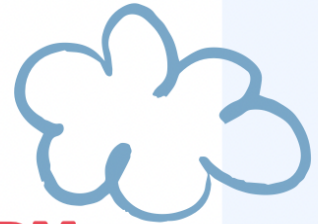


# QUIZ NIGHT

**AT THE DICKIN ARMS,  
LOPPINGTON SY4 5SR**

**SUNDAY 22<sup>ND</sup> MARCH**

**FIRST QUESTION @ 7.00PM**



## QUIZ PRIZES

**1<sup>ST</sup> PRIZE = DRINKS  
HAMPER**

**2<sup>ND</sup> PRIZE = £50 MYSTERY  
HAMPER**

**3<sup>RD</sup> PRIZE = £40 FOOD  
HAMPER**

**KINDLY DONATED BY LET LOOSE DOG PARK,  
BRADSHAW LIVESTOCK &  
JAMIE WARD'S BUTCHERS & DELI**

**£5 PER HEAD, TEAMS OF 4  
TO INCLUDE NIBBLES**

**LOTS OF FANTASTIC PRIZES TO  
BE WON, INCLUDING RAFFLE**



**CAN'T MAKE THE QUIZ BUT  
STILL WANT  
TO HELP RAISE FUNDS AND  
WIN BIG PRIZES ?  
GET YOUR RAFFLE TICKETS  
NOW!!**

**CONTACT TORI 07069733276  
TO BUY RAFFLE TICKETS**

## RAFFLE PRIZES

**THE IRON WORKS, OSWESTRY -  
ENTRANCE AND CREAM TEA  
OSWESTRY SHOW FAMILY TICKET  
BULL & DOG £25 VOUCHER  
WHIXALL MARINA £10 VOUCHER  
SHERRATTS BIRD FEED HAMPER  
OLLIE AND BOO NOTICE BOARD  
MYSTERY PRIZE TARTAN FOX  
PADEL WHITCHURCH VOUCHER  
AND MUCH MORE**



## Events in Shropshire over Easter

Free things to do in Shopshire, visit: <https://plutoniumsox.com/days-out/uk-days-out-travel/free-things-to-do-in-shropshire/>

**Hawkstone Park Follies – Enchanted Easter Egg Hunt:** Hunt for eggs in caves and woodlands.

**Easter Adventures at Attingham Park (National Trust):** Family trails inspired by game shows.

**A Very Victorian Easter at Blists Hill Victorian Town:** Egg dancing, trails through Victorian streets, and special printing workshops from April 18-21.

**Stokesay Castle Easter Adventure Quest:** A historic quest at the 13th-century manor house.

**Park Hall Farm – Fairytale Eggstravaganza:** Meet fairy-tale characters, hunt for eggs, and see animals.

**Oswestry Street Circus:** A weekend of acrobatics and interactive activities.

**Easter Paper Crafts at Cartref:** Crafting events on April 4, 2026.

**Easter Motor Show at Weston Park & Gardens (Shifnal):** over the Easter weekend.

**Ludlow Castle:** Easter Egg Trail through the historic ruins (March 23 – April 7).

**Alderford Lake:** Easter egg hunts, games, and lake activities (March 28 – April 6).

**Comer Woods (National Trust):** Easter trail in the woodlands (March 21 – April 6).



Information & Support | Influence & Change

### Useful Resources- Sleep



Working wonders for children with brain conditions

Improving the health of babies, children and young people throughout Shropshire, Telford

Is your child/ young person struggling with their sleep? There are a number of organisations with resources and guides to help!



### Support available while waiting for your appointment

There are a range of local support providers that you and your child can access while you wait for a health appointment or assessment. Many of these can continue to support you and your child beyond your appointment/assessment.

- Development or wellbeing
- Communication
- Physical and sensory needs
- Emotional health and wellbeing
- Neurodivergent needs
- Behaviours of concern
- Preparing for adulthood



Improving the health of babies, children and young people throughout Shropshire, Telford and Wrekin

For more information, please see the Healthier Together website

Information & Support | Influence & Change  
Contact: [info@paccshropshire.org.uk](mailto:info@paccshropshire.org.uk)

# SHREWSBURY REPAIR CAFE

Your radio doesn't work?  
Your jumper has a hole in it?  
Your ornament is broken?



Bring it to the repair cafe  
Have it fixed & repaired  
Refreshments & cake

Shrewsbury United Reformed Church  
Coleham Head

3<sup>rd</sup> Saturday every month  
10am till 2pm

shrewsrepaircafe



Repairing the World  
One Item at a Time



## introduce



A safe and fun environment for disabled children to kickstart their football journey!




**MONDAY'S 6 - 7PM**

**DATE : TBC**

SHAWBURY RECREATIONAL CENTRE, SY4 4PB

EMAIL ON:  
WELFARE.SHAWBURYUNITEDFC@GMAIL.COM

AIMEE : 07708 250905  
SIMON : 07780 703167

Boys & Girls  
ages:  
5-11




**SM&AG**  
**DEADLINE: FRI 27 MAR 2026**

Photo © John Moore



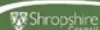
# WILDLIFE PHOTOGRAPHY COMPETITION

Competition

**A call to photographers of all ages - Capture the wild**

Enter our Wildlife Photography Competition by Friday 27 March, with categories for under 11s, ages 12-18 and adults. See website for details:

[www.shropshiremuseums.org.uk/events/](http://www.shropshiremuseums.org.uk/events/)



## WHITCHURCH PROSTATE SUPPORT GROUP



Every 2<sup>nd</sup> & 4<sup>th</sup> Thursday of the month  
7-9pm  
Whitchurch Rugby Club

A confidential, supportive space for men living with prostate cancer

Whether you're newly diagnosed, in treatment, monitoring your psa, or adjusting after treatment, you are welcome here

### What?

Honest conversations with other men who understand  
Supportive, Respectful, judgement-free discussion

### Who?

Men with prostate cancer (any stage) or prostate concerns or monitoring



CONFIDENTIAL • RESPECTFUL • EMPATHETIC

TERM TIME CLASSES  HOLIDAY WORKSHOPS



# Easter Holiday Workshops

FOR AGES 5-12+

## Springtime Wonders

15% OFF  
use code:  
EBJ831

The Wynnstay Hotel,  
43 Church Street, Oswestry SY11 2SZ

£25/Class / £45/Day / £135/Week

07796352162 | NORTHSHROPSHIRE@CYGNETSARTSCHOOL.COM  
WWW.CYGNETSARTSCHOOL.COM/NORTHSHROPSHIRE

Cygnets teaches traditional drawing, painting, and sculpture, combined with unique projects, experienced teachers & professional quality materials.

We run two holiday workshops per day, so students can attend individual classes, or bring a packed lunch and stay for both!

*Lots of different projects to choose from:*

|  |  |  |
|--|--|--|
|   | <b>Tuesday 31<sup>st</sup> March</b><br>10.30 - 12PM Chick with Clay<br>12.30 - 2PM Mumuration with Gauache                              |   |
|   | <b>Wednesday 1<sup>st</sup> April</b><br>10.30 - 12PM Hare with Fineliner & Watercolour<br>12.30 - 2PM Colourful Eggs with Mixed Pastels |   |
|  | <b>Thursday 2<sup>nd</sup> April</b><br>10.30 - 12PM Cygnets with Acrylic<br>12.30 - 2PM Feather in Charcoal                             |  |

northshropshire@cygnetsartschool.com  cygnetsartschool.com/northshropshire

# COFFEE & CHAT

## Wem

3<sup>rd</sup> Thursday of each month  
13.00-14.45

Wem Library, 3 High St, Wem, Shrewsbury SY4 5AA

You can get free information, advice and support on all aspects of family life, at our Early Help Family Drop-in. You can chat, have a coffee and see how we can help. We support families with children aged 0-19 years (up to 25 years for young people with special educational needs and disabilities) We aim to make it easier for you to ask for help and get support when you need it.

**REFRESHMENTS WILL BE PROVIDED**  
**\*PLEASE BRING YOUR OWN SEALED CUP/TRAVEL MUG\***



 [shropshire.gov.uk/early-help](http://shropshire.gov.uk/early-help)



'A terrific performer...she needs to be seen and heard wherever possible,'  
MICHAEL ROSEN

# JUDE SIMPSON




## A NOISE ANNOYS

A FAMILY SHOW  
FEATURING POETRY,  
SONGS, AND SILLINESS


'Witty, engaging, fun'

'Loved how interactive it was'

'Great for all ages'

First presented at: CAMBRIDGE JUNCTION  Supported by:  

Monday 30th March, 10.30am  
Shropshire Hills Discovery Centre, SY7 9RS  
Tickets: Adults £5, Child £3  
[www.artsalive.co.uk](http://www.artsalive.co.uk)  
01588 676060

Touring with... 

# Pond Dipping

## Easter Holiday Activity

Monday 30<sup>th</sup> March - Friday 3<sup>rd</sup> April  
AND  
Monday 6<sup>th</sup> - Friday 10<sup>th</sup> April

4-11  
year  
olds

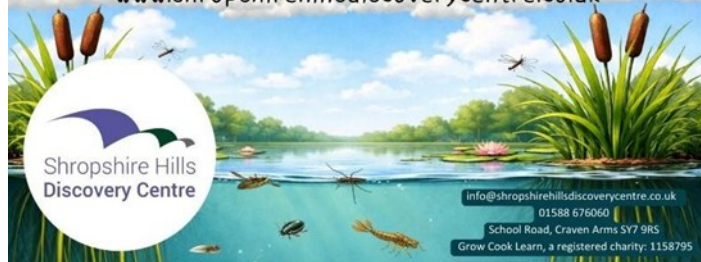
This Easter holidays, explore a fascinating under water world as you dip our pond for mini beasts to identify. Draw or take photos of your favourites.

£5 per  
child

2pm  
-  
3.30pm

Book  
Online

[www.shropshirehillsdiscoverycentre.co.uk](http://www.shropshirehillsdiscoverycentre.co.uk)



Shropshire Hills  
Discovery Centre

[info@shropshirehillsdiscoverycentre.co.uk](mailto:info@shropshirehillsdiscoverycentre.co.uk)  
01588 676060  
School Road, Craven Arms SY7 9RS  
Grow Cook Learn, a registered charity: 1158795



Shrewsbury Town Foundation

# Easter Holiday Clubs

Shrewsbury at  
The Croud Meadow, SY2 6ST

Ludlow at  
Bromfield Rd, Ludlow SY8 2BN

For children aged 5 to 11, our holiday clubs are open to all abilities with a focus on fun and sports! Groups of mixed age and ability

9am - 3pm 30<sup>th</sup> March and 31<sup>st</sup> March at Ludlow

9am - 3pm 30<sup>th</sup> March - 2<sup>nd</sup> April at Shrewsbury

9am - 3pm 7<sup>th</sup> April - 10<sup>th</sup> April at Shrewsbury

Scan the QR code or visit our website to book a single day for £18

[Foundationstfc.co.uk/fun](http://Foundationstfc.co.uk/fun)

Get in touch  
E: [admin@foundationstfc.co.uk](mailto:admin@foundationstfc.co.uk)

T: 01743 289177 opt 6



Shrewsbury Town Foundation

# Easter HAF

Shrewsbury at  
The Croud Meadow, SY2 6ST

Ludlow at  
Bromfield Rd, Ludlow SY8 2BN

For children aged 5 to 11, in receipt of free school meals, our HAF clubs are open to access fun activities and food in the school holidays

9am - 3pm 30<sup>th</sup> and 31<sup>st</sup> at Ludlow

9am - 3pm 30<sup>th</sup> March - 2<sup>nd</sup> April at Shrewsbury

Scan the QR code or visit our website to book a single day

[Foundationstfc.co.uk/fun](http://Foundationstfc.co.uk/fun)

Get in touch

E: [admin@foundationstfc.co.uk](mailto:admin@foundationstfc.co.uk)

T: 01743 289177 opt 6



Shropshire  
**family**  
Information Service

Info, advice and support,  
for families in Shropshire

Find us on:



Shropshire  
Council

NEIGHBOURHOOD MATTERS

Sign up to receive alerts from your local policing teams [www.neighbourhoodmatters.co.uk](http://www.neighbourhoodmatters.co.uk)

West Mercia  
POLICE

## The SEND Local Offer

Lots of information and support for children and young people with SEND and their families, including:

- Education
- Health and wellbeing
- Family support
- Social care
- Preparing for adulthood
- Early help
- Things to do
- Education, health and care plan (EHCP)
- Travel and transport
- Financial support

[local.offer@shropshire.gov.uk](mailto:local.offer@shropshire.gov.uk) 0345 678 9063  
[www.shropshire.gov.uk/the-send-local-offer/](http://www.shropshire.gov.uk/the-send-local-offer/)



If you need help accessing the Local Offer please speak to your school or local library.

Shropshire  
Council

