

Dear Parents/Carers

WHIXALL SCHOOL NEWS

We demonstrate our Values of **respect, caring, supportiveness, tolerance, perseverance, forgiveness, and trust**, at Whixall C.E. Primary School in all that we strive to do each day.

*** School Admissions Dates ***

Applications for Reception School Places

Children born between 1 September 2019 and 31 August 2020 can start primary school from 2nd November 2023 to 15th January 2024 online.

To apply please visit: <http://www.shropshire.gov.uk/schooladmissions>
click on: Apply to start or transfer school.

September 2024

Educational Performance

The national performance tables have recently been published and we are delighted to report that our 2023 results were well above the national average in reading and mathematics and above average in writing, due to the progress that our children made. Huge congratulations to all of our children and staff, we are extremely proud of their achievements.

Arts Links

On our website you will find a guide to local opportunities for the arts, resources and support. We hope that you will find it useful. The page can be found from the 'news and events' tab—art all around us. If you know of any other organisations etc that should be included, please let us know.

Wrap Around Care

We are offering wrap around care after our normal school clubs from 4.30 p.m. until 6.00 p.m. These must be booked and paid for in advance by 3.00 p.m. of the Friday of the previous week (booking will close at 3 p.m.)—our apologies but unfortunately until the club becomes established, we cannot accept bookings in any other way.

Clubs will therefore be organised as follows:

3.00 p.m. —4.30 p.m.—Usual clubs—please see above at £1.50 per session these are booked and paid for in the usual way.

4.30 p.m. to 5.30 p.m. - £4 per session payable under the booking section of sQuid

4.30 p.m. to 6.00 p.m.—£6 per session payable under the booking section of sQuid

If anyone wishes their child to access club on Thursday 4th or Friday 5th January, please book by Wednesday 3rd January.

Dates for your Diary

18.12.23	Dentist talk for children in Dragonfly Class.
19.12.23	Height, weight and hearing tests for children in reception and Year 6 Carol Service in Church at 1.30 p.m. Everyone is welcome to attend, there is no need to inform us of your intention to attend. You are welcome to take your child home from the Church.
20.12.23	Last day of the Autumn Term – children break up
21.12.23 – 22.12.23	Holiday Club (Thurs and Fri)
03.01.24	PD Day – children not in school (however Holiday Club will be available)
04.01.24	Spring Term Begins – children back to school

A holiday message from SpaDental Whitchurch

We know this holiday is a busy time of the year for families, and perhaps a trip to the dentist doesn't sound like the best fun. But we'd like to take this opportunity to let you know we have NHS appointments for children available during the holiday on Wednesday 20th, Thursday 21st, Saturday 23rd, Thursday 28th, Saturday 30th of December 2023 and Wednesday 3rd, Thursday 4th and Saturday 6th January 2024. We would love to see your children during this time! Making an appointment is easy. Please fill in the website 'Contact Us' form: <https://www.spadental.co.uk/contact/>. We believe the best present you can give your children is healthy teeth!

Raffle Tickets

Thank you so much to everyone who has bought a raffle ticket for our hamper draw. If all raffle tickets could be sent into school on Monday please.
Thank you for your continued support.



spadental
Whitchurch

NHS children's appointments

- ◆ General dentistry
- ◆ Oral health education
- ◆ Saturday opening
- ◆ After-school appointments

Scan & Book your Appointment Here



Corser House, 17 Green End,
Whitchurch, Shropshire, SY13 1AD

www.spadental.co.uk/contact



Shropshire family
Information Service

Info, advice and support,
for families in Shropshire

Find us on:



The SEND Local Offer

Lots of information and support for children and young people with SEND and their families, including:

- Education
- Health and wellbeing
- Family support
- Social care
- Preparing for adulthood
- Early help
- Things to do
- Education, health and care plan (EHCP)
- Travel and transport
- Financial support

local.offer@shropshire.gov.uk 0345 678 9063
www.shropshire.gov.uk/the-send-local-offer/

If you need help accessing the Local Offer please speak to your school or local library.

Shropshire Council

Children can start school in reception at the beginning of the academic year following their fourth birthday.

Therefore, children born between 1 September 2019 and 31 August 2020 can start primary school from September 2024.

Applications should be made online. See the attached guidance to help you make your application. If you have any queries or encounter any difficulties completing your application, please contact the School Admissions Team by email - school-admissions@shropshire.gov.uk.

Please note that the online facility is open from **2 November 2023**. You must apply by 15 January 2024. If there is a reason why your application is late i.e. due to a house move, please email school-admissions@shropshire.gov.uk to advise

Applications received after 15 January, without exceptional reasons, are considered late. Late applications won't be processed until all the applications received on time have been allocated. This may result in your child not being offered a school place at you preferred school.

Shropshire Local Authority residents should use the Shropshire online portal to make their application for any English state infant or primary school. If the school you wish to apply to isn't there, please email school-admissions@shropshire.gov.uk with the name of the school, and we will get it added

- If you wish to apply for a neighbouring Welsh authority primary school, you should apply directly to either Powys or Wrexham authorities

If you want to apply for a Shropshire school but do not reside in the Shropshire Council authority area, please refer to our [who to apply to](#) page. Telford local authority residents must apply via Telford and Wrekin Council not Shropshire Council

- Applicants from either overseas, Scotland, Wales or Northern Ireland can use the Shropshire Council website to make an application for a Shropshire school

IF AN APPLICATION IS MADE THROUGH THIS PORTAL FROM A RESIDENT IN ANOTHER ENGLISH AUTHORITY OTHER THAN SHROPSHIRE IT WILL BE DISCARDED

BEFORE MAKING AN APPLICATION

Ensure you read the [Parent's Guide to Education in Shropshire](#). This guide provides all the correct information to help you make your applicatio

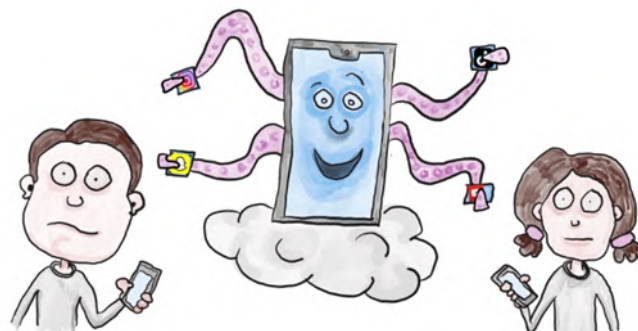
- Note the importance of naming more than one school on your application, particularly when not applying for your catchment area school

Ensure that you're happy with the application before you submit it. The online portal doesn't allow you to change your application once it's been submitted

Snapchat

What is Snapchat?

Snapchat is a social media app used for messaging and sharing photos and videos. **You must be 13+ to sign up.** Users can send messages (snaps) to others that can only be seen for a set time e.g. 10 seconds and users can also upload snaps to stories, which disappear after 24 hours.



What should I be concerned about?

There are risks to using Snapchat, including the risk of your child viewing content that is not appropriate for them, location sharing and contact from strangers.

Family Centre features

Family Centre includes features such as allowing you to see who your child is friends with, who they are communicating with (not the contents of conversations though) and who your child has sent messages, photos or videos to in the last week. You will also be able to report any accounts that you are concerned about as well as restrict sensitive content. Snapchat have also published a safety checklist to help support conversations about how to use Snapchat safely:

<https://parents.snapchat.com/en-GB/parental-controls?lang=en-GB>

New safeguarding features

Snapchat have recently announced their newest features to help protect 13-17-year-olds. The first feature is in-app warnings so a pop-up warning will now be displayed if someone tries to add them as a friend that they don't have mutual contacts with, or the person isn't in their contacts.

The second feature is 'stronger friending protections.' Currently 13-17-year-olds must have several mutual friends in common for that user to show up in search results or as a friend suggestion, but this number has been increased. **These two features are available to users aged 13-17-year-olds, this is one of the reasons why it is always important for your child to sign up with their correct date of birth, so they can benefit from any such features.**

<https://values.snap.com/en-GB/news/new-safeguards-for-snapchatters-2023>

Safety tips

Please make sure the appropriate privacy settings are set up on Snapchat and your child knows how to block and report other users if necessary:

<https://support.snapchat.com/en-GB/article/privacy-settings2>

More information

<https://www.virginmedia.com/blog/parental-controls/snapchat>

Artificial Intelligence (AI)

It can be difficult to keep up to date with new technologies and to know if there are any related risks that we need to be aware of when using new technologies. AI is being talked about a lot, so it is worthwhile learning more about it now to help support/answer questions if our children show an interest. Twinkl provide a brilliant overview of AI here:

<https://www.twinkl.co.uk/blog/parents-guide-top-tips-for-navigating-generative-ai-safely-with-kids>